





SRI KIOSK

Self-Service Kiosk,
One Stop Solution for Governments & Corporates.....

- Self Enrollment / Form Submission
- Instant ID (Smartcard) Issuance
- Online Payments and Services
- Ultimate Personalised Customer Experience



SRI Kiosk shows the way-of-life in future today itself, by providing Self-Service experience to all individuals and Businesses without changing the core systems and taking advantage of the current technologies to bring information as well as business controls to the fingertips of the concerned along with efficient **Electronic Service Delivery (ESD)**.

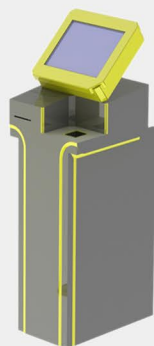

Self-Service SRI-Kiosk

- Secure Multi Level Authentication
- Self-Enrolment KYC Apps
- Multiple services Scan, Print, Pay...
- Instant-Issuance
- Quick & Convenient
- 24/7 Available
- Scalable to meet all Business Needs
- Customizable Apps


SRI-Kiosk designed to handle tomorrow's needs today and simpler to operate like your smartphone or an ATM....

SRI-Kiosk Configuration

- Industrial Screen & CPU with Windows OS
- PVC Card Printer
- QR / Barcode Reader
- Contact Less Smart Card Encoder (Optional)
- Contact Smart Card Encoder (Optional)
- Thermal Printer (Optional)
- Document Scanner (Optional)
- A4 Laser Printer (Optional)
- USB / Ethernet Connectivity Bluetooth / Wi-Fi / GPRS(Optional)
- Remote Service / Administration
- Secured Access to Modules

Transaction SRI-Kiosk





INNOMATIONS
Innovative Automations

Technical Specifications

Touch Monitor

Product name:	15.6" Capacitive Touch Monitor
IP Rating:	IP65 Front / IP40 Back
LCD Panel	
Screen diagonal (Inch/cm):	15.6/39.6
Aspect ratio:	16:9
Physical resolution:	1920×1080
Maximum showable resolution:	1920×1080
Colours displayed:	262K
Brightness (cd/m2):	250
Contrast:	800:1
Typical reaction time Tr/ Tf (ms):	15/15
Visual Angle horizontal/vertical (°):	170/170
Backlight / Backlight Lifetime (hours):	LED / min. 15,000
External Connectors	
Video:	1x VGA, 1x DVI-D, 1x HDMI 1.3 (incl. HDCP)
Audio:	1x PC-Audio
Touch Connector:	1x USB
Connectors:	1x 12V DC-IN
Touch Panel	
Touch Technology:	Projected Capacitive 10-point Multitouch Windows;
Touch Panel Drivers:	Linux; Mac; Android
Touch Life (Contacts):	Unlimited
Surface Hardness:	7H
Surface Treatment:	Anti-glare (chemical etched)
Operation / Mechanical	
Operating Temperature (°C):	-10 ~ +60
Humidity Range (RH):	10% - 90%
Net weight (kg) :	3.40
Gross weight (kg):	5.30 (incl. cartontage)
Housing material:	Rubber front case, Plastic back case Housing (cm)
L x W x H(cm):	38.93 x 24.68 x 3.45
Mounting:	VESA 100
Power	
Power Indicator:	Green LED
Power Supply:	100-240V ACDC active switching; 12V DC-Out
Working Power (V):	12
Power Consumption (W):	13
Stand-By Consumption (W):	<1

Compute module



CPU	
Processor:	Dual Core Intel Celeron J4005 processor(4m Cache, up to 2.70Ghz)
Cores	Dual Core
Supported Operating Systems:	Windows 10, 64-bit
Board Number:	NUC7JYB
Board Form Factor:	UCFF (4" x 4")
Socket:	Soldered-down BGA
Internal Drive Form Factor:	2.5" Drive
Internal Drives Supported:	1
Lithography:	14 nm
TDP:	10 W
DC Input Voltage Supported:	12-19 VDC
No of Cores:	2
No of Threads:	2
Processor Base Frequency:	2.00GHz
Memory & Storage	
Max memory size:	8gb
Memory Types:	DDR4-24001.2V SO-DIMM
Max # of Memory Channels:	2
Max Memory Bandwidth:	38.4 GB/s
Max # of DIMMs:	2
ECC Memory Supported:	No
Processor Graphics	
Processor Graphics:	Intel® UHD Graphics 600
Integrated Graphics:	Yes
Graphics Output:	2x HDMI 2.0a
No of Displays Supported:	2
Expansion Options	
Removable Memory Card Slot:	SDXC with UHS-I support
I/O Specifications	
USB Ports:	6
USB Configuration:	2x front and 2x rear USB 3.0; 2x USB 2.0 via internal headers
SATA 6.0 Gb/s Ports:	1
Audio:	7.1 digital, L+R+mic (F); L+R+TOSLINK @
Integrated LAN:	Realtek 8111H-CG
Integrated Wireless:	Intel® Wireless-AC 9462 + Bluetooth 5.0
Consumer Infrared Rx Sensor:	Yes
S/PDIF Out Connector:	Yes
Additional Headers:	TOSLINK CEC, 2x USB2.0, AUX_PWR, FRONT_PANEL

Camera



Resolution:	1080p/30fps - 720p/30fps
Focus type:	autofocus
Lens technology :	glass
Built-in mic:	yes(Noise reducing)
Field Of View:	78°
Compatible with :	Windows® 10 or later, Windows 8, Windows 7
Low Light Correction:	Yes(Automatic)
Mega Pixels(MP) :	8MP

RFID Card reader



Data Interface	USB 2.0 / RS232(optional)
Contactless Communication	ISO 14443 A / 14443 B(optional)
Frequency	13.56 Mhz
Baud Rate	106 / 212 / 424 / 848kbps
Reading Distance	5 - 10 cms
Protocol	SRI-Protocol, PC / SC(Optional)
Indicator	2 LED's (Power, Data communication)
Input Power	150mA (USB Power)
Supporting OS	Windows, Android,(Linux(optional)
Operating Temperature	-20 C to 60 C

Smart Card Printer

Print technology	Direct-to-card dye-sublimation/resin thermal transfer
Print capabilities	Full-color and UV, or monochrome printing capability in the same printer. Alphanumeric text, logos and digitized signatures; 1D/2D barcode images. Printer pooling/sharing
Print resolution <i>Standard mode:</i> <i>High-quality mode:</i>	300 x 300 dots per inch; standard text, bar code and graphics printing 300 x 600 dots per inch; enhanced text, bar code and graphics printing 300 x 1200 dots per inch; enhanced text and barcode printing 256 shades per color panel
Print speed <i>Full-color printing:</i> <i>Monochrome printing:</i>	Up to 220 cards per hour printing cards on one side (YMCKT*). Up to 165 cards per hour printing cards on two sides (YMCKT-K*). Up to 1,000 cards per hour printing cards on one side (Black HQ*).
Card capacity <i>Automatic feed:</i> <i>Front exception card slot</i> <i>Separate reject location and holding tray (10-card capacity)</i> <i>Input hopper empty detection</i>	100-card input for 0.030 in. (0.76 mm) cards; 25-card output standard
Physical dimensions	L 21.2 in. x W 8.8 in. x H 8.8 in. (53.8 cm x 22.4 cm x 22.4 cm)
Weight Two-sided printing	12.0 lbs (5.4 kg) (depending on options)
Connectivity	Bidirectional USB 2.0 high speed; Ethernet 10 Base-T/100-Base-TX (with activity light).



QR / Barcode Scanner

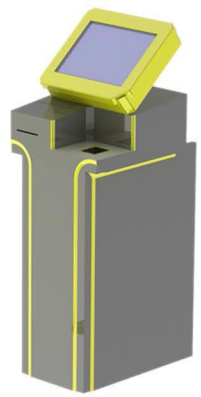


Performance Characteristics	Sensor Resolution: 1280 x 800 pixels Field of View: 42° horizontal, 28° vertical Pitch/Skew/Roll Tolerance: ± 60° I ± 60° I 360° Aiming Element (LED): 610 nm ± 10 nm Illumination Element: 660 nm ± 5 nm (LED) Minimum Print Contrast: 20% absolute dark/light reflectance
Power Requirements	Supply Voltage: 5.00 V ± 0.5 V Low Power I Suspend Current Draw: 2.5 mA (max) Idle Current: 125 mA RMS (typical) (scan/decode session): 265 mA RMS (typical) Peak Current: 480 mA
Ambient Light Immunity	Total darkness to 10,000 ft. candles (107,369 lux)
Humidity	Operating: 95% RH, non-condensing at 50° C Storage: 85% RH, non-condensing at 70° C
Sealing	IP54
Electrical Safety	IEC/EN 60950-1, IEC/EN 62368-1
EMC (Medical Electrical Equipment)	EN 60601-1-2:2015, IEC 60601-1-2:2014
ESD	+/- 15KV air, +/-BKV indirect. Class B
Drop Rating	Unit functions normally after multiple 5 ft(152 cm) drops to concrete at room temperature.
Temperature	Operating: -4° to 122° F (-20° to 50° C) Storage: -40° to 158° F (-40° to 70° C)
Dimensions	1.10 in. (2.8 cm) H x 1.89 in. (4.8 cm) L x 2.17 in. (5.5 cm) W
Weight	4.13 oz. (117 g)
Supported Interfaces	USB - USB (full speed)

1KVA Online UPS



NOMINAL POWER	1000VA/800W
INPUT/OUTPUT PHASES	1/1
INPUT Voltage: Rated frequency: Power factor:	230 V (1ph) 160+300 V upto 110 V @ 60% load 50/60 Hz 0.99
OUTPUT Rated voltage: Voltage tolerance: Rated frequency: Overload: Crest factor:	208/220/230/240 V ± 1% 50/60 Hz (46+54 Hz / 56+64 Hz) (in battery mode 50/60 ± 0.1 Hz) Up to 130% for 1 minute 3:1
BATTERIES Type: Back-up time @ 75% of rated VA load pf 0.7: Voltage: Battery charger:	sealed lead-acid maintenance free- expected life 3/5 years >8 min 24 VDC Setting up to 6 A
ENVIRONMENT Ambient temperature: Relative humidity: Maximum altitude: Noise level at 1 m:	0 to 40°C (15 to 25 °C for maximum battery life) 0 to 95% without condensation 1000 m without derating < 55 dBA
UPS CABINET Weight: Dimensions W x D x H:	10 kg 145 x 285 x 220 mm
STANDARDS Degree of protection: Safety: EMC: Product certification:	IP20 EN 62040-1 EN 62040-2 CE



Education – Smartcard based SRI - Education Self Services for

- Student
- Staff
- Visitor
- Vendor



Health – Smartcard based SRI - Health Self Services for

- Patient
- Doctor/Staff
- Attendant
- Visitor
- Vendor



Retail – Smartcard based SRI - Retail Self Services for

- Staff
- Customer
- Loyalty
- Vendor



e-Governance – Smartcard based Health cards, PDS, Labour, e-Passport etc.

Transport – Smartcard SRI - Transport Self Services for

- Passenger
- Staff - Regular
- Staff - Contractor
- Visitor
- Vendor



Corporates- Smartcard based SRI - Corporates Self Services for

- Staff
- Visitor
- Vendor



Hotel – Smartcard based SRI - Hotel Self Services for

- Customer
- Staff
- Loyalty
- Vendor



Game zone – Smart Card based SRI - Game zone Self Services for

- User
- Staff
- Vendor



Cinema – Smart Card based SRI - Cinema Services for

- User
- Staff
- Vendor



INNOMATIONS
Innovative Automations

SAI-RAM'S INNOMATIONS INDIA PVT LTD



#200, 2nd Floor, Sukavi Tranquil,
House #19-1-123/A, Chinthalachenu,
Ramtulasi Kalyanamandapam Road,
Tirupati - 517501, A.P.

☎ 8500199000
✉ info@innomations.com
🌐 www.innomations.com

